

Detail Hexagon Taskworx® Tile

Stijlnummer	H001X	
Collectie	Auxiliary	
Producttype	Tapijttegel	
Construction	Standard	Data + Performance
Type Fabricage	ISO 2424	tufted 1/12" 47.2 per 10cm
Uitzicht	ISO 2424	Niveau Lus
Verfmethode	EN 994	100% In Oplossing Geverfd
Productformaat	EN 994	57 cm x 49 cm 20 tiles (4.25 m²) per box
Primaire Backing	ISO 2424	Pet Nonwoven
Secundaire Backing	ISO 2424	Taskworx® Tegel Polymeer Gemodificeerd Bitumen
Vezel	ISO 2424	Aquafil Polyamide 6
Totale Dikte	ISO 1765	5.3 mm
Afgewerkte Pooldikte	ISO 1766	2.1 mm
Totale Massa	ISO 8543	3920 g/m²
Getuft Gewicht	ISO 2424	450 g/m²
Effectieve Poolmassa	ISO 8543	259 g/m²
Pooldichtheid	ISO 8543	0.122 g/cm³
Totaal Gerecycleerde Inhoud		51% (pre-consumer 51% post-consumer 0%)



Gegevens

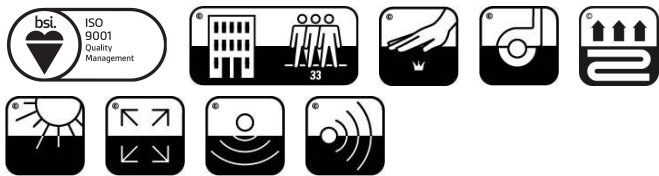
Steken	ISO 1763	184,000/m² 39 per 10 cm
Elektrostatische Weerstand	ISO 6356	≤ 2.0 kv (Stroll Test)
Gebruik Classificatie	EN 1307	33 Commercial Heavy
Luxe klasse	EN 1307	LC1
Dimensionale Stabiliteit	EN 986	≤ 0.2%
Contactgeluidsisolatie	ISO 10140	21db
Geluidsabsorptieclassificatie	ISO 354/11654	0.10 Aw
Warmteweerstand m² K/w	ISO 8302	0.046 M² K/W Tog 0.46
Weerstand Tegen Droog Uitglijden	ISO 13893	Pass / No Pulled Loops
Kleurvastheid Voor Licht	ISO 105-B02	>6
Ontvlambaarheid	EN 13501-1	Bfl-S1 (Adhered Testing)
Stoel Met Wiel tjes	EN 985	≥2.4 Continuous USE

15 Jaar Commercieel Beperkt subject to installation in full accordance with manufacturer's instructions and a regular effective cleaning and maintenance programme.

Aanbevolen Installatiemethode

Random

Monolithic



21dB

Corporate Headquarters +1 800 257 7429 | +1 706 532 7984 | Atlanta +1 404 853 7429 | Bengaluru +91 80 6773 0202 | Beijing +86 10 6568 588 | Chicago +1 312 467 1331 | Dubai +971 4 584 6956 | Hong Kong +852 2623 0371 | Latin America (Miami) +1 305 827 5912 | London +44 207 961 4120 | Los Angeles +1 800 233 1614 | Melbourne +61 3 9939 8543 | Mexico City +55 5010 7600 | Mumbai +91 22 6284 5050 | Nantong +86 400 800 7429 | New York +1 212 953 7429 | Paris +33 (0) 1 81 22 44 39 | San Francisco +1 415 955 1920 | Santiago +562 2431 5000 x 550 | São Paulo +55 11 3071 1702 | Shanghai +86 21 3338 4000 | Singapore +65 6733 1811 | Sydney +1 800 556 302

Coördinerende Producten

Carpet Tile: **Complement Hexagon Taskworx® Tile, Feature Hexagon Taskworx® Tile, Complement Taskworx® Tile, Detail Taskworx® Tile, Feature Taskworx® Tile**

Kenmerken + Certificeringen

Cradle to Cradle gecertificeerd™	Bronzen Vlak (Versie 3.1)
Environmental Product Declaration (EPD)	3de Partij Gecertificeerd in Overeenstemming Met ISO14044, ISO14025 & EN15804
milieugarantie	Terugnamebeleid Aangeboden Voor Alle Taskworx Producten
ISO 9001	Gecertificeerd
land van herkomst	Verenigd Koninkrijk
BREEAM Contribution Credit	Certificate of Approval Schools/Offices/Health/Industrial Shed Retail

Well V2 Contribution Credit

X08 Hazardous Material Reduction Part 1: Limit Hazardous Materials Optimization	C2C Bronze Level (Version 3.1)
X10 Volatile Compound Reduction Part 1 (A): Manage Volatile Organic Compounds (VOCs) Optimization	C2C Bronze Level (Version 3.1)
X10 Volatile Compound Reduction Part 2: Manage Semi-Volatile Organic Compounds (SVOCs) Optimization	C2C Bronze Level (Version 3.1)
X11 Long Term Emissions Control Part 2: Flooring Optimization	M1> Emissions Class For Building Material
X13 Enhanced Material Precaution Part 1: Select Optimized Materials Optimization	C2C Bronze Level (Version 3.1)
X14 Material Transparency Part 1: Promote Ingredient Disclosure Optimization	C2C Bronze Level (Version 3.1)

Groen Leed Bijdragekrediet

"MR-krediet: openbaarmaking en optimalisering van bouwproducten Milieuproductverklaringen - Optie 1: Milieuproductverklaring (EPD)"	3rd Party Certified in Accordance with ISO14044, ISO14025 & EN15804
"MR-krediet: Openbaarmaking en optimalisering van bouwproducten Materiaalingrediënten - Optie 1: Rapportage materiaalingrediënten"	C2C Bronze Level (Version 3.1)
"MR-krediet: openbaarmaking en optimalisering van bouwproducten Materiaalingrediënten - Optie 2: Optimalisering van materiaalingrediënten"	C2C Bronze Level (Version 3.1)

Air Quality

Indoor Air Comfort Gold	Certified
M1	Certified

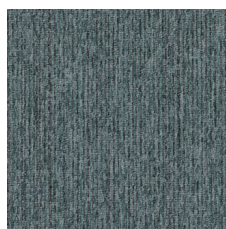
Memberships

WGBC Framework	WGBC Framework
UKGBC	UKGBC
Emirates Green Building Council	Emirates Green Building Council
Chemsec	Chemsec

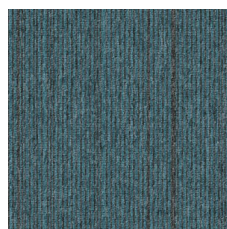
Lichtreflectiewaarde



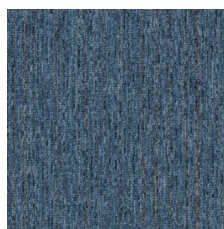
Smoke Spring 83326
LRV 14.6



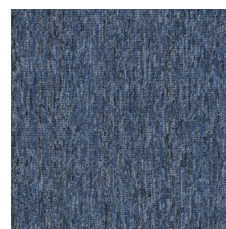
Smoke Mint 83327
LRV 13.2



Pebble Lagoon 83419
LRV 10.8



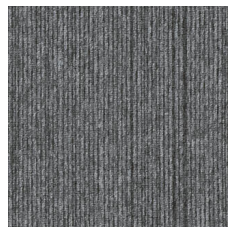
Smoke Cadet 83440
LRV 10.7



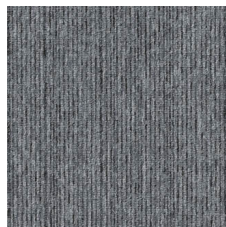
Smoke Azure 83486
LRV 10.2



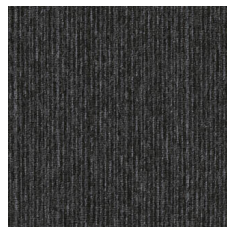
Smoke Black 83505
LRV 6.1



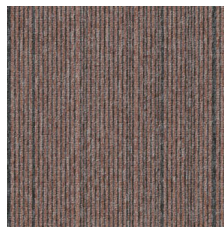
Pebble Ash 83535
LRV 13.5



Smoke Ice 83536
LRV 16



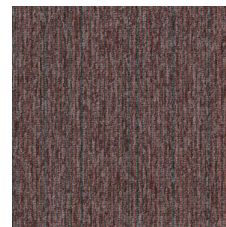
Pebble Flint 83549
LRV 5



Pebble Blush 83675
LRV 13.8



Pebble Coral 83866
LRV 9.8



Pebble Blossom 83870
LRV 9.2

Aanvullende Informatie

**Manufactured in ISO 9001 certified facility. Meets or exceeds all local and national regulations in country of manufacture.

[Installation Guidelines](#)

[Maintenance Guidelines](#)

[15 jaar commercieel beperkt](#)

Specifications are subject to nominal manufacturing variance. Material supply and/or manufacturing processes may necessitate changes without notice.

This product is an exclusive design and may not be duplicated in any manner. Use of this design in the creation of another product design is also strictly prohibited.

Visit shawcontract.com/testing for more information.



Corporate Headquarters +1 800 257 7429 | +1 706 532 7984 | Atlanta +1 404 853 7429 | Bengaluru +91 80 6773 0202 | Beijing +86 10 6568 588 | Chicago +1 312 467 1331 | Dubai +971 4 584 6956 | Hong Kong +852 2623 0371 | Latin America (Miami) +1 305 827 5912 | London +44 207 961 4120 | Los Angeles +1 800 233 1614 | Melbourne +61 3 9939 8543 | Mexico City +55 5010 7600 | Mumbai +91 22 6284 5050 | Nantong +86 400 800 7429 | New York +1 212 953 7429 | Paris +33 (0) 1 81 22 44 39 | San Francisco +1 415 955 1920 | Santiago +562 2431 5000 x 550 | São Paulo +55 11 3071 1702 | Shanghai +86 21 3338 4000 | Singapore +65 6733 1811 | Sydney +1 800 556 302

© 2024 Shaw Industries Group, Inc., a Berkshire Hathaway Company
May 15, 2024

3 of 3